

DAHLIA *days*

Ashton Gardens at Thanksgiving Point

September 19 - 20 • 9 am - 8 pm



Welcome to DAHLIA days

The dramatic, bold flowers of dahlias that grace the late summer and autumn gardens are not to be missed!

This weekend, see what dahlia devotees around the world adore about this genus of flowers that has such spectacular diversity. Gorgeous cultivars range from feathery blooms as big as a child's head to tiny pom-pom flowers of circular perfection. Some formal, some splashy, these vibrant blooms come in every color imaginable. Their unfurling petals are wonderful in the garden, and dahlias are spectacular as cut flowers.

1. The *Dahlia* genus has 42 species, 15 standard forms, thousands of varieties, and more are being bred around the world every year. In Ashton Gardens we have a few thousand plants of 119 different varieties.
2. Dahlias are not hardy here in northern Utah and the tubers must be dug and stored in a cool place indoors during the winter. The tubers can then be replanted outdoors the following spring.
3. Dahlia tubers must have a body, neck, and eyes. If one of these is missing, the tuber is not viable and will not grow.
4. Dahlias are tuberous plants from the high mountains of Mexico & Guatemala. The Aztecs called them *cocoxchitl* and images of the flowers are found in Aztec art.
5. Dahlia tubers were sent to Spain from Central America by Spanish explorers about 1785. In Europe the genus was named *Dahlia* in honor of Dr. Anders Dahl, a pupil of the botanist Linnaeus.
6. Dahlias were viewed as too boisterous for the formal beds of upper-class gardens throughout much of the 1800s and 1900s. Dahlias have always been embraced by the working classes.

Dahlias are classified into different forms based on their shape, size, and structure. The most common dahlia forms are called:

- | | | |
|---------------|------------------|---------------|
| 1. Anemone | 6. Lacinated | 11. Pompon |
| 2. Ball | 7. Mignon Single | 12. Peony |
| 3. Cactus | 8. Novelty | 13. Single |
| 4. Collarette | 9. Orchid | 14. Stellar |
| 5. Decorative | 10. Orchette | 15. Waterlily |





Dahlia 'Boom Boom White'

TYPE: *Ball*

COLOR: *White*

LOCATION:

Dahlia Field Row 1, 3, 6 & 8, Parterre Cut Outs SE



Dahlia 'Bridezilla'

TYPE: *Medium Waterlily*

COLOR: *White*

LOCATION:

Dahlia Field Row 12



Dahlia 'Figaro White'

TYPE: *Miniature Peony*

COLOR: *White*

LOCATION:

Creek 1 Cobblestones, Parterre Cut Outs SE, Parterre East Island Triangle, WT Campus Hidden Falls, WT Campus Loggia North



Dahlia 'Fleurel'

TYPE: *Large Informal Decorative*

COLOR: *White*

LOCATION:

Dahlia Field Row 10, Parterre Cut Outs SE



Dahlia 'KA Bella Luna'

TYPE: *Small Formal Decorative*

COLOR: *White*

LOCATION:

Dahlia Field Row 6



Dahlia 'KA Cloud'

TYPE: *Large Informal Decorative*

COLOR: *White*

LOCATION:

Dahlia Field Row 9



Dahlia 'Lady Liberty'

TYPE: *Medium Formal Decorative*

COLOR: *White*

LOCATION:

Dahlia Field Row 7



Dahlia 'Make a Wish'

TYPE: *Miniature Orchid*

COLOR: *White*

LOCATION:

Dahlia Field Row 11



Dahlia 'Ahoy Matey'

TYPE: *Small Waterlily*

COLOR: *Yellow*

LOCATION:

Dahlia Field Row 12



Dahlia 'American Sun'

TYPE: *Small Formal Decorative*

COLOR: *Yellow*

LOCATION:

Dahlia Field Row 10



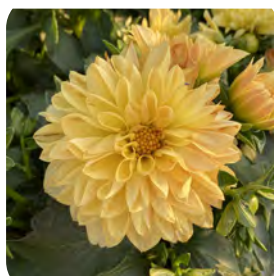
Dahlia 'Canary Fubuki'

TYPE: *Small Lacinated*

COLOR: *Yellow*

LOCATION:

Dahlia Field Row 12



Dahlia 'Dalina Grande Romero'

TYPE: *Miniature Formal Decorative*

COLOR: *Yellow*

LOCATION:

North Slope 2 Duo Beds



Dahlia 'Figaro Yellow Shades'

TYPE: *Miniature Peony*

COLOR: *Yellow*

LOCATION:

Creek 1 Cobblestones, Creek 3 Crabapple Bed,
Fragrance Garden Raised Beds, Parterre Cut Outs SW,
Parterre East Island Triangle



Dahlia 'Golden Scepter'

TYPE: *Miniature Formal Decorative*

COLOR: *Yellow*

LOCATION:

Dahlia Field Row 5 & 8



Dahlia 'Golden Torch'

TYPE: *Miniature Ball*

COLOR: *Yellow*

LOCATION:

Dahlia Field Row 12



Dahlia 'Grand Prix'

TYPE: *Giant Informal Decorative*

COLOR: *Yellow*

LOCATION:

Creek 1



Dahlia 'Kelvin Floodlight'

TYPE: *Large Informal Decorative*

COLOR: *Yellow*

LOCATION:

Dahlia Field Row 6



Dahlia 'La Luna'

TYPE: *Giant Informal Decorative*

COLOR: *Yellow*

LOCATION:

Dahlia Field Row 12



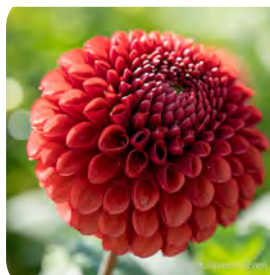
Dahlia 'Dazzling Sun'

TYPE: *Large Informal Decorative*

COLOR: *Yellow*

LOCATION:

Dahlia Field Row 12



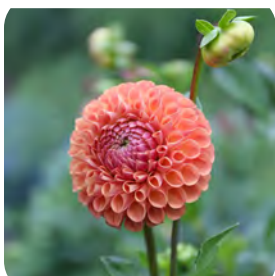
Dahlia 'Copper Boy'

TYPE: *Ball*

COLOR: *Orange*

LOCATION:

Dahlia Field Row 1, 3, 6, 8, & 10, Parterre Cut Outs NW



Dahlia 'Cornel Bronze'

TYPE: *Ball*

COLOR: *Orange*

LOCATION:

Dahlia Field Row 7



Dahlia 'Crazy Legs'

TYPE: *Small Stellar*

COLOR: *Orange*

LOCATION:

Dahlia Field Row 5



Dahlia 'Figaro Orange Shades'

TYPE: *Miniature Peony*

COLOR: *Orange*

LOCATION:

Creek 1 Cobblestones, Fragrance Garden Raised Beds,
North Slope 2 Duo Beds, North Slope 4 Hopi Sun



Dahlia 'Gingersnap'

TYPE: *Small Waterlily*

COLOR: *Orange*

LOCATION:

Dahlia Field Row 2, 5 & 8



Dahlia 'Honeymoon'

TYPE: *Large Informal Decorative*

COLOR: *Orange*

LOCATION:

Dahlia Field Row 11



Dahlia 'KA Blood Orange'

TYPE: *Miniature Formal Decorative*

COLOR: *Orange*

LOCATION:

Dahlia Field Row 4 & 11



Dahlia 'KA Crème Brulee'

TYPE: *Small Formal Decorative*

COLOR: *Orange*

LOCATION:

Dahlia Field Row 4



Dahlia 'Mango Madness'

TYPE: *Giant Informal Decorative*

COLOR: *Orange*

LOCATION:

Dahlia Field Row 7, Parterre Cut Outs NW



Dahlia 'Mirella'

TYPE: *Ball*

COLOR: *Orange*

LOCATION:

North Slope 4 Alice Bed



Dahlia 'Okapi's Sunset'

TYPE: *Small Cactus*

COLOR: *Orange*

LOCATION:

Dahlia Field Row 1, 3, 5 & 7



Dahlia 'Safe Shot'

TYPE: *Small Ball*

COLOR: *Orange*

LOCATION:

Dahlia Field Row 5



Dahlia 'Teddy'

TYPE: *Small Waterlily*

COLOR: *Orange*

LOCATION:

Dahlia Field Row 12



Dahlia 'Uptown Girl'

TYPE: *Small Formal Decorative*

COLOR: *Orange*

LOCATION:

Dahlia Field Row 12



Dahlia 'Ace Summer Sunset'

TYPE: *Giant Informal Decorative*

COLOR: *Peach*

LOCATION:

Dahlia Field Row 6, Parterre Cut Outs NW



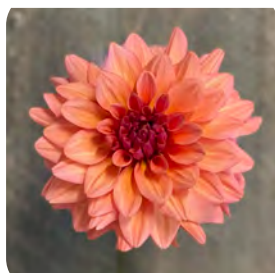
Dahlia 'Caribbean Fantasy'

TYPE: *Small Informal Decorative*

COLOR: *Peach*

LOCATION:

Dahlia Field Row 3 & 8



Dahlia 'Connecticut Coral'

TYPE: *Small Formal Decorative*

COLOR: *Peach*

LOCATION:

Dahlia Field Row 12



Dahlia 'Happy Single First Love'

TYPE: *Miniature Single*

COLOR: *Peach*

LOCATION:

Dahlia Field Row 7



Dahlia 'KA Daybreak'

TYPE: *Small Formal Decorative*

COLOR: *Peach*

LOCATION:

Dahlia Field Row 4



Dahlia 'KA Desert Rose'

TYPE: *Small Formal Decorative*

COLOR: *Peach*

LOCATION:

Dahlia Field Row 11



Dahlia 'KA Honeycomb'

TYPE: *Miniature Ball*

COLOR: *Peach*

LOCATION:

Dahlia Field Row 9



Dahlia 'KA Mocha Katie'

TYPE: *Small Formal Decorative*

COLOR: *Peach*

LOCATION:

Dahlia Field Row 11



Dahlia 'KA Sunny Cove'

TYPE: *Small Formal Decorative*

COLOR: *Peach*

LOCATION:

Dahlia Field 9



Dahlia 'Kelsey Annie Joy'

TYPE: *Small Collarete*

COLOR: *Peach*

LOCATION:

Dahlia Field Row 3, 7, 8 & 11



Dahlia 'Melody Dora'

TYPE: *Small Waterlily*

COLOR: *Peach*

LOCATION:

Dahlia Field Row 12



Dahlia 'Peaches'

TYPE: *Small Formal Decorative*

COLOR: *Peach*

LOCATION:

Dahlia Field Row 12



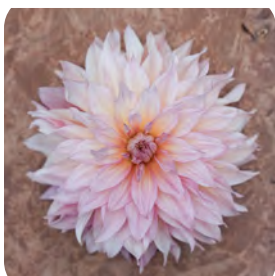
Dahlia 'Preference'

TYPE: *Small Cactus*

COLOR: *Peach*

LOCATION:

Dahlia Field Row 2, 5 & 8



Dahlia 'RM Gigi'

TYPE: *Giant Informal Decorative*

COLOR: *Peach*

LOCATION:

Dahlia Field Row 4



Dahlia 'Totally Tangerine'

TYPE: *Miniature Anemone*

COLOR: *Peach*

LOCATION:

North Slope 4 Hopi Sun



Dahlia 'Labyrinth'

TYPE: *Medium Informal Decorative*

COLOR: *Peach*

LOCATION:

Dahla Field Row 10, Parterre Carousel



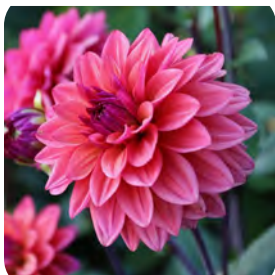
Dahlia 'Alauna Clair Obscur'

TYPE: *Medium Lacinated*

COLOR: *Pink*

LOCATION:

Dahlia Field Row 1, 5, & 7



Dahlia 'American Dawn'

TYPE: *Small Formal Decorative*

COLOR: *Pink*

LOCATION:

Dahlia Fields Row 3 & 11



Dahlia 'Belle of Barmera'

TYPE: *Large Informal Decorative*

COLOR: *Pink*

LOCATION:

Dahlia Field Row 3



Dahlia 'Bonesta'

TYPE: *Small Formal Decorative*

COLOR: *Pink*

LOCATION:

Dahlia Field Row 1, 3, 7, & 10



Dahlia 'Café au Lait Rose'

TYPE: *Large Informal Decorative*

COLOR: *Pink*

LOCATION:

Dahlia Field Row 12



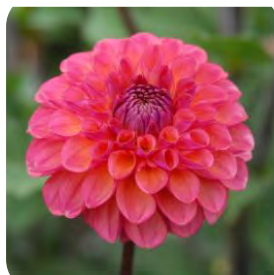
Dahlia 'Cranberry Classic'

TYPE: *Large Informal Decorative*

COLOR: *Pink*

LOCATION:

Dahlia Field Row 12, Creek 2 Sun Bed



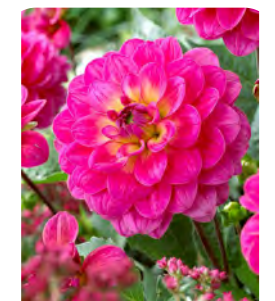
Dahlia 'Doodlebug'

TYPE: *Miniature Formal Decorative*

COLOR: *Pink*

LOCATION:

Dahlia Field Row 12



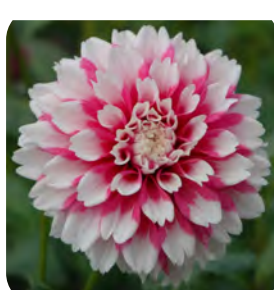
Dahlia 'El Santo'

TYPE: *Medium Waterlily*

COLOR: *Pink*

LOCATION:

Dahlia Field Row 2, 5, 8 & 11



Dahlia 'Fuzzy Wuzzy'

TYPE: *Miniature Informal Decorative*

COLOR: *Pink*

LOCATION:

Dahlia Field Row 6



Dahlia 'Gerrie Hoek'

TYPE: *Medium Waterlily*

COLOR: *Pink*

LOCATION:

Dahlia Field Row 12



Dahlia 'KA Boho Peach'

TYPE: *Miniature Formal Decorative*

COLOR: *Pink*

LOCATION:

Dahlia Field Row 4 & 6



Dahlia 'KA Cinder Rose'

TYPE: *Miniature Formal Decorative*

COLOR: *Pink*

LOCATION:

Dahlia Field Row 4 & 11



Dahlia 'KA Chiffon'

TYPE: *Medium Informal Decorative*

COLOR: *Pink*

LOCATION:

Dahlia Field Row 9



Dahlia 'KA Guava'

TYPE: *Medium Formal Decorative*

COLOR: *Pink*

LOCATION:

Dahlia Field Row 9



Dahlia 'KA Mocha Jake'

TYPE: *Small Formal Decorative*

COLOR: *Pink*

LOCATION:

Dahlia Field Row 12



Dahlia 'KA Mocha Maya'

TYPE: *Small Informal Decorative*

COLOR: *Pink*

LOCATION:

Dahlia Field Row 4 & 12



Dahlia 'KA Pearl'

TYPE: *Medium Formal Decorative*

COLOR: *Pink*

LOCATION:

Dahlia Field Row 2, 6 & 11



Dahlia 'KA Penny Lane'

TYPE: *Small Formal Decorative*

COLOR: *Pink*

LOCATION:

Dahlia Field Row 4



Dahlia 'KA Rhubarb'

TYPE: *Small Formal Decorative*

COLOR: *Pink*

LOCATION:

Dahlia Field Row 4



Dahlia 'Kogane Fubuki'

TYPE: *Small Lacinated*

COLOR: *Pink*

LOCATION:

Dahlia Field Row 6



Dahlia 'Koko Puff'

TYPE: *Pompon*

COLOR: *Pink*

LOCATION:

Dahlia Field Row 12



Dahlia 'Linda's Baby'

TYPE: *Ball*

COLOR: *Pink*

LOCATION:

Dahlia Field Row 2, 5 & 8



Dahlia 'Melody Allegro'

TYPE: *Small Waterlily*

COLOR: *Pink*

LOCATION:

Dahlia Field Row 6



Dahlia 'Mystic Sparkler'

TYPE: *Small Single*

COLOR: *Pink*

LOCATION:

Long Formal Border



Dahlia 'Penhill Dark Monarch'

TYPE: *Large Informal Decorative*

COLOR: *Pink*

LOCATION:

Dahlia Field Row 2 & 8



Dahlia 'Poodle Skirt'

TYPE: *Miniature Anemone*

COLOR: *Pink*

LOCATION:

Dahlia Field Row 12



Dahlia 'Quiet Splendor'

TYPE: *Small Informal Decorative*

COLOR: *Pink*

LOCATION:

Dahlia Field Row 10



Dahlia 'Raspberry Punch'

TYPE: *Medium Informal Decorative*

COLOR: *Pink*

LOCATION:

Dahlia Field Row 7



Dahlia 'Revelation Pink'

TYPE: *Small Peony*

COLOR: *Pink*

LOCATION:

North Slope 4 Last Bed, Secret Garden Outside East Corner, VC Patio Triangle Bed



Dahlia 'RM Berry Kiss'

TYPE: *Small Formal Decorative*

COLOR: *Pink*

LOCATION:

Dahlia Field Row 9



Dahlia 'RM Lure'

TYPE: *Miniature Formal Decorative*

COLOR: *Pink*

LOCATION:

Dahlia Field Row 9



Dahlia 'RM Mauvelous'

TYPE: *Miniature Formal Decorative*

COLOR: *Pink*

LOCATION:

Dahlia Field Row 9



Dahlia 'Santander'

TYPE: *Medium Formal Decorative*

COLOR: *Pink*

LOCATION:

Dahlia Field Row 12



Dahlia 'Sincerity'

TYPE: *Small Formal Decorative*

COLOR: *Pink*

LOCATION:

Dahlia Field Row 12, Parterre Cut Outs NE, VC Patio Triangle



Dahlia 'St Martin'

TYPE: *Small Waterlily*

COLOR: *Pink*

LOCATION:

Dahlia Field Row 8, Parterre Cut Outs NE, Secret Garden Inside Center



Dahlia 'Star's Favorite'

TYPE: *Medium Cactus*

COLOR: *Pink*

LOCATION:

Dahlia Field Row 7



Dahlia 'Urchin'

TYPE: *Small Cactus*

COLOR: *Pink*

LOCATION:

Dahlia Field Row 12



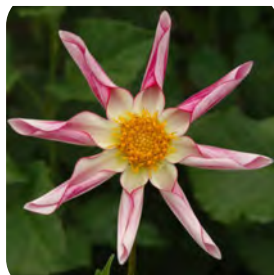
Dahlia 'Valley Porcupine'

TYPE: *Small Formal Decorative*

COLOR: *Pink*

LOCATION:

Dahlia Field Row 11



Dahlia 'Willie Willie'

TYPE: *Small Orchid*

COLOR: *Pink*

LOCATION:

Dahlia Field Row 12



Dahlia 'Wizard of Oz'

TYPE: *Miniature Ball*

COLOR: *Pink*

LOCATION:

Dahlia Field Row 3, 5, 6, 8 & 10, North Slope 4 Alice, Parterre Cut Outs NE, Secret Garden Inside Center



Dahlia 'Avignon'

TYPE: *Giant Informal Decorative*

COLOR: *Pink*

LOCATION:

Creek 3, Parterre Carousel



Dahlia 'Hypnotica Rose Swirl'

TYPE: *Miniature Formal Decorative*

COLOR: *Pink*

LOCATION:

Parterre Cut Outs NE, Secret Garden Outside Corner, VC Front Promenade



Dahlia 'Bloomquist York'

TYPE: *Medium Formal Decorative*

COLOR: *Red*

LOCATION:

Dahlia Field Row 12



Dahlia 'Catching Fire'

TYPE: *Medium Informal Decorative*

COLOR: *Red*

LOCATION:

Dahlia Field Row 3



Dahlia 'Figaro Red Shades'

TYPE: *Miniature Peony*

COLOR: *Red*

LOCATION:

Creek 1 Cobblestones, Fragrance Garden Raised Beds, Parterre Cut Outs SW, Parterre East Island Triangle



Dahlia 'Garden Wonder'

TYPE: *Medium Formal Decorative*

COLOR: *Red*

LOCATION:

Dahlia Field Row 12



Dahlia 'Hollyhill Dr Rick'

TYPE: *Small Incurved Cactus*

COLOR: *Red*

LOCATION:

Dahlia Field Row 12



Dahlia 'Pineland's Pam'

TYPE: *Medium Cactus*

COLOR: *Red*

LOCATION:

Dahlia Field Row 12



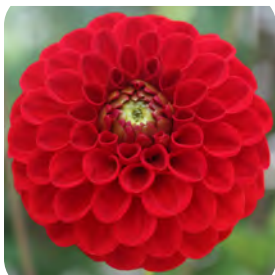
Dahlia 'Raz Ma Taz'

TYPE: *Miniature Formal Decorative*

COLOR: *Red*

LOCATION:

Dahlia Field Row 8



Dahlia 'Red Cap'

TYPE: *Ball*

COLOR: *Red*

LOCATION:

Dahlia Field Row 12, Parterre Cut Outs SW



Dahlia 'Tempest'

TYPE: *Small Formal Decorative*

COLOR: *Red*

LOCATION:

Dahlia Field Row 12



Dahlia 'Manhattan Island'

TYPE: *Large Formal Decorative*

COLOR: *Red*

LOCATION:

Dahlia Field Row 5 & 7, Creek 1, Secret Garden Inside Center



Dahlia 'Rocco'

TYPE: *Pompon*

COLOR: *Burgundy*

LOCATION:

Dahlia Field Row 10



Dahlia 'Jowey Mirella'

TYPE: *Ball*

COLOR: *Burgundy*

LOCATION:

North Slope 4 Alice Bed



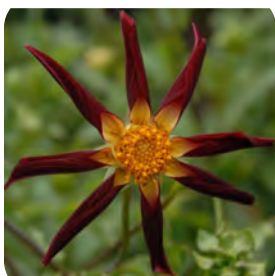
Dahlia 'Mingus Alex'

TYPE: *Medium Informal Decorative*

COLOR: *Burgundy*

LOCATION:

Dahlia Field Row 12



Dahlia 'Tahoma Moonshot'

TYPE: *Miniature Orchid*

COLOR: *Burgundy*

LOCATION:

Dahlia Field Row 11



Dahlia 'Verrone's Obsidian'

TYPE: *Miniature Orchid*

COLOR: *Burgundy*

LOCATION:

Dahlia Field Row 12



Dahlia 'Bluetiful'

TYPE: *Medium Informal Decorative*

COLOR: *Purple*

LOCATION:

Dahlia Field Row 3 & 7



Dahlia 'Café au Lait Royal'

TYPE: *Large Informal Decorative*

COLOR: *Purple*

LOCATION:

Dahlia Field Row 3 & 8, Creek 1, Parterre Carousel



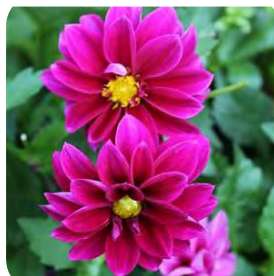
Dahlia 'Crème de Cassis'

TYPE: *Small Waterlily/Formal Decorative*

COLOR: *Purple*

LOCATION:

Dahlia Field Row 12



Dahlia 'Figaro Violet Shades'

TYPE: *Miniature Peony*

COLOR: *Purple*

LOCATION:

Fleur-de-lis, Watersiwe Shade Bed



Dahlia 'Franz Kafka'

TYPE: *Miniature Ball*

COLOR: *Purple*

LOCATION:

Dahlia Field Row 2, 3, 6 & 7, North Slope 4 Alice,
Parterre Cut Outs SW



Dahlia 'Hypnotica Lavender'

TYPE: *Miniature Formal Decorative*

COLOR: *Purple*

LOCATION:

VC Entry Rectangle Beds



Dahlia 'Imperialis'

TYPE: *Small Single*

COLOR: *Purple*

LOCATION:

Dahlia Field Row 1



Dahlia 'KA Lavender Blush'

TYPE: *Large Informal Decorative*

COLOR: *Purple*

LOCATION:

Dahlia Field Row 6 & 11



Dahlia 'Lavender Ruffles'

TYPE: *Giant Informal Decorative*

COLOR: *Purple*

LOCATION:

Dahlia Field Row 7 & 11



Dahlia 'Purple Gem'

TYPE: *Small Semi-cactus*

COLOR: *Purple*

LOCATION:

Dahlia Field Row 2, 5, 6 & 7



Dahlia 'RM Hannah Joe'

TYPE: *Small Formal Decorative*

COLOR: *Purple*

LOCATION:

Dahlia Field Row 9



Dahlia 'Thomas Edison'

TYPE: *Large Formal Decorative*

COLOR: *Purple*

LOCATION:

Dahlia Field Row 2, 5, 8 & 10



Dahlia 'Crazy Love'

TYPE: *Small Informal Decorative*

COLOR: *Purple*

LOCATION:

Dahlia Field Row 11